



**SPEED**  
Manufacturing Platform



**smARt.view**  
Realtime Plant Tour

# End-to-End **DIGITAL** SOLUTIONS



**LAMP**  
Smart Valves



**ValvTrac**  
Digital Traceability



**L&T Valves**



L&T Valves is a wholly-owned subsidiary of Larsen & Toubro, a leading engineering, construction, manufacturing and services conglomerate. The company, trusted by the industry for over five decades, offers innovative products and solutions that enhance safety, reliability and performance in flow-control systems across the globe.

### smARt.view

#### Realtime Plant Tour

L&T Valves has pioneered a digital collaboration platform that leverages Augmented Reality technologies to virtually teleport customers to our manufacturing facilities - minimising the limitation of distance and time.

- Visual monitoring and inspection
- Seamless remote collaboration
- Remote training on complex maintenance issues



## THE FUTURE IS DIGITAL

The transformation at L&T Valves is powered by an end-to-end digital backbone and a portfolio of smart products and applications. From the first customer contact to aftermarket support and beyond, the solutions maximise operational efficiency and customer satisfaction.

### SPEED

#### Digital Manufacturing Platform

SPEED is a proprietary manufacturing and project management platform that leverages digital man-machine interfaces to ensure end-to-end visibility and error-free on-time manufacture. SPEED enables collaboration across functions, facilitates concurrent decision making - and enhances transparency, trust and speed.

- Tracks manufacturing progress using barcodes/ RFID tags, analyses variances and raises alerts
- BoM configuration, material issue and inventory management
- Provides machining, assembly and testing procedures in line with contract requirements
- Visual control - Instructions and performance dashboards

### ValvTrac

#### Digital Traceability

ValvTrac is a path-breaking digital traceability solution that literally provides information at the finger-tips

After assembly, SPEED data is linked to RFID tags attached to the valves. At customer locations, the tags provide access to valve data, test certificates and information required to install, operate and maintain the valve. Digital identification and smarter documentation - that is the ValvTrac promise.



### LAMP

#### L&T Valves Asset Management Programme

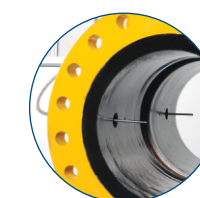
LAMP is a remote valve performance monitoring system integrated with diagnostic and communication modules.

At the core of LAMP is a reliable SIL3- capable L&T valve integrated with smart sensors to measure valve operational and health parameters, based on customer requirements.

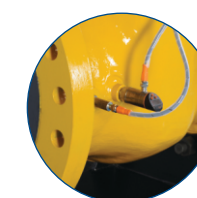
Once LAMP is in service, the data it generates can be ported to the plant or process control system using standard field communication protocols.

LAMP data can also be accessed from a secure, dedicated cloud computing platform.

LAMP takes valve maintenance to the next level, and allows customers to transition from preventive maintenance based on thumb rules to predictive maintenance based on real data.



Temperature



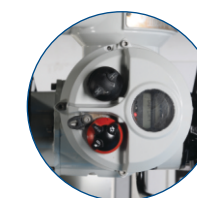
Pressure



Vibration



Leakage



Torque Position



## Gate, Globe & Check Valves

Bolted Bonnet & Pressure-seal  
#150 to 4500, Up to 72" (1800 mm)

Cryogenic Valves  
Low Emission Valves  
Bellows-sealed Valves  
API Monogrammed, SIL3-capable



## Ball Valves

Trunnion-mounted  
#150 to 2500, Up to 56" (1400 mm)  
Side-entry and Top-entry  
Soft-seated and Metal-seated  
API Monogrammed, SIL3-capable

Floating Ball Valves, #150 to 2500, Up to 8" (200 mm)  
Soft-seated and Metal-seated



## Butterfly Valves

Triple-offset, #150 to 1500, Up to 100" (2500 mm)  
API Monogrammed, SIL3-capable

Soft-seated, PN6 to PN25  
Integrally-moulded - Wafer, Lugged & Flanged, Up to 36" (900 mm)  
Large-size Flanged Valves, Up to 120" (3000 mm)



## Double Block and Bleed Plug Valves

#150 to 600,  
Up to 42" (1050 mm)  
API Monogrammed



## Valve Automation Solutions

SIL3-capable Automation Solutions

High Integrity Pressure Protection System (HIPPS),  
Emergency Shutdown Valves (ESDV)



A wholly owned subsidiary of Larsen & Toubro Limited

### L&T Valves Limited

Mount - Poonamallee Road, Manapakkam, Chennai 600 089, INDIA  
Tel.: 1800 2094 545 ContactUs@Lntvalves.com [www.Lntvalves.com](http://www.Lntvalves.com)  
CIN: U74999MH1961PLC012188  
Publication Number: VF105/1118. As we continuously endeavour to improve our products, the data given herein is subject to change. Please refer [www.Lntvalves.com](http://www.Lntvalves.com) for the latest publication.

Registered Office:  
L&T House, N. M. Marg  
Ballard Estate  
Mumbai 400 001, INDIA

